

Spark / Safety Alert



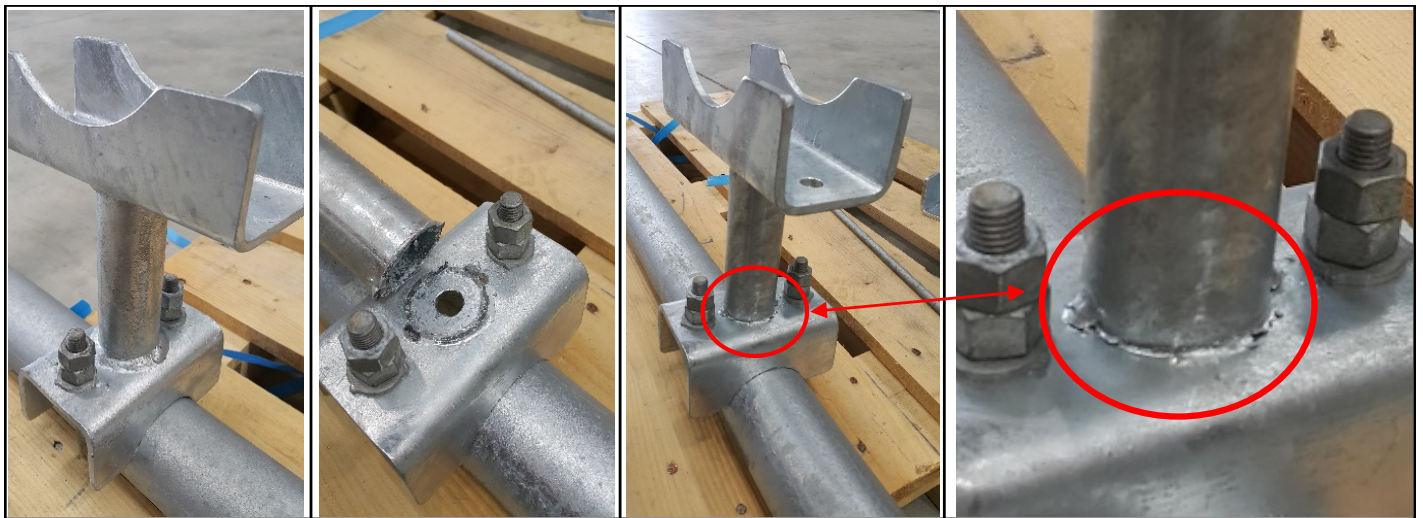
Monitoring of Antenna mounting brackets

Following a resent incident at Linton 03/04/2018



New steel antenna mounts supplied for build have failed at welding joints before installation. The joint was only tack welded in two locations, compromising structural integrity. The mount was due to be installed on a 20m tower with 50kg of equipment. Working at height already poses a high degree of risk, without adding unstable equipment with an unpredictable outcome.

AREA OF CONCERN



RISK CONTROLS

- **All Mounts/Brackets should be inspected before:**
 - Installation
 - Latching onto installed brackets
 - Latching pully for rigging
- **No work should be undertaken on any Spark NZ tower before inspecting steelwork.** Defects should be reported to Spark immediately.
- **Unsafe work** - Where you have concerns about your safety you have the right to refuse unsafe work. As a worker, you have responsibilities for keeping yourself and others safe. Communicate any safety concerns to your supervisor /employer in the first instance.
- **Where concern is raised** - Spark should be contacted immediately. Spark's goal is to achieve a safe and healthy workplace for all workers at a Spark worksite. Any worker can contact Spark directly using the contacts below.

QUESTIONS

If you have any questions around Health and Safety in Spark's network sites you should contact

Health and Safety - healthandsafety@spark.co.nz

Spark Safety Alert	Antenna Mounting Brackets
Issue	001
Date	05/04/2018
Authorised	Paul Uttley
H&S Contact	Riaan Hunt – 021 1891307